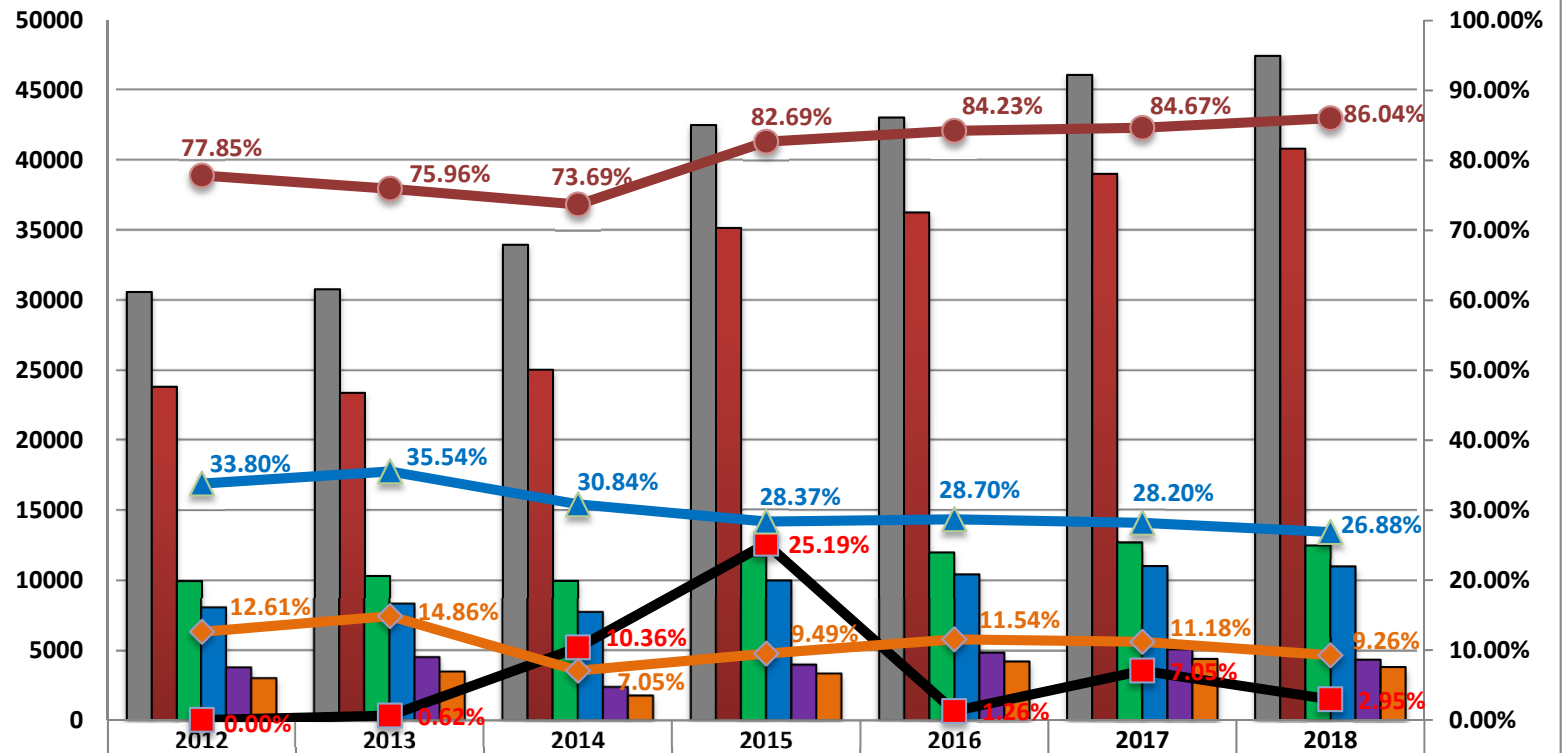


MUT Applicants Requiring Financial Aid from 2012 to 2018 Entry



	2012	2013	2014	2015	2016	2017	2018
■ Total Applicants	30596	30787	33978	42537	43074	46110	47472
■ Total Apps Req. Fin Aid	23820	23385	25040	35172	36283	39042	40844
■ Total Apps Met	9933	10300	9943	11762	11976	12734	12478
■ Met & Required Fin Aid	8051	8311	7723	9979	10414	11010	10977
■ Total Offers Made	3773	4509	2383	3972	4815	5049	4313
■ Apps with Offers Req Fin Aid	3003	3475	1766	3339	4186	4365	3782
■ % Req. Fin Aid Increase / Decrease	0.00%	0.62%	10.36%	25.19%	1.26%	7.05%	2.95%
● % of Apps Req Fin Aid	77.85%	75.96%	73.69%	82.69%	84.23%	84.67%	86.04%
▲ % Met & Required Fin Aid	33.80%	35.54%	30.84%	28.37%	28.70%	28.20%	26.88%
◆ % Apps with Offers Req Fin Aid	12.61%	14.86%	7.05%	9.49%	11.54%	11.18%	9.26%